

Waukegan Timeline of Events

1923

Waukegan Station first constructed and begins operations – Units 1 through 5 in service

1952

Unit 6 at Waukegan brought on line

1958

Unit 7 at Waukegan brought on line

1962

Unit 8 at Waukegan brought on line

1920s

1950s

1960s

1970s

1980s

Waukegan

Midwest Generation

General



Waukegan Timeline of Events

Late 1970s

Units 1 through 5 at Waukegan are retired

1977

Waukegan East and West ponds constructed with Hypalon liner

1992 – 2002

- Extensive investigation of former Greiss-Pfleger Tannery site, including U.S. Radiator Co. (a.k.a., General Boiler)
- Finds elevated levels of arsenic, chromium, magnesium, and lead

1970s

1980s

1990

1991

1992

1993

1994

1995

1996

1997

Waukegan

Midwest Generation

General

Waukegan Timeline of Events

1999

MWG begins operating all Stations

2001

Marla Race begins work at MWG

2002 – 2005

MWG begins review of ash ponds at its Stations

- Locates historic drawings
- Conducts internal planning
- Retains consultants (NRT and KPRG)
- Site visits and reviews

1998

1999

2000

2001

2002

Waukegan

Midwest Generation

General

Waukegan Timeline of Events

Jun 23, 2003

[Link](#)

ELUC established on the western side of MWG's property due to environmental impacts from neighboring sites

Sep 2003

MWG relines Waukegan East Ash pond with HDPE liner

Nov 2004

MGW relines Waukegan West Ash Pond with HDPE liner

Jul 22, 2004

Sampling of Waukegan bottom ash. Sample results show ash qualifies for CCB

2003

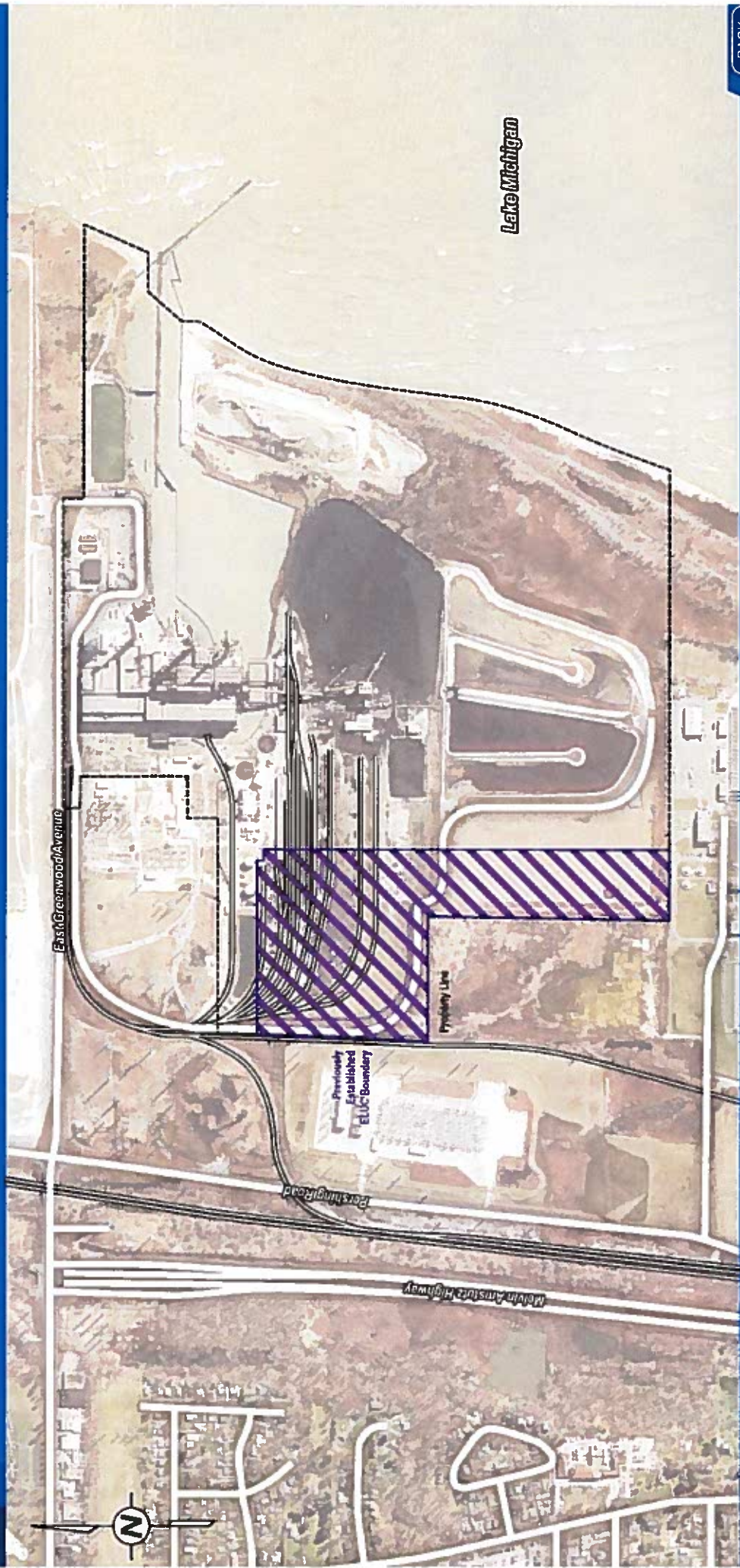
2004

Waukegan

Midwest Generation

General

Waukegan Station – Tannery/U.S. Radiator ELUC



Waukegan Timeline of Events

Summer 2005

MWG completes "pond characterizations"

Aug 31, 2005

KPRG inspects Waukegan liners; finds the liners are in good condition and installed correctly

Oct 13, 2005

KPRG report of geotechnical analysis to assess soils around ponds

Dec 21, 2005

NRT prepares evaluation and ranking of ash ponds with a timeframe to reline ponds

Jan 2006

MWG begins process of relining ponds, including budgeting for capital for work

Nov 2006

Second refinement to impoundment liner upgrade priority and liner system options and costs

Oct 2006

MGW receives refined prioritizations and estimation of costs for relining ash ponds

2005

2006

Waukegan

Midwest Generation

General

Waukegan Timeline of Events

Dec 2007

Waukegan Unit 6 retired

Jul 2009

MWG responds to IEPA request for groundwater monitoring, includes a preliminary hydrogeological assessment of the stations and a potable water survey and assessment; no risk to potable wells

Apr - May 2009

IEPA asks Illinois coal fired power plants to install groundwater monitoring around ash ponds;
MWG agrees (others do not)

2008

MWG conducts RFP process for relining

Dec 2008

TVA coal ash spill

2007

2008

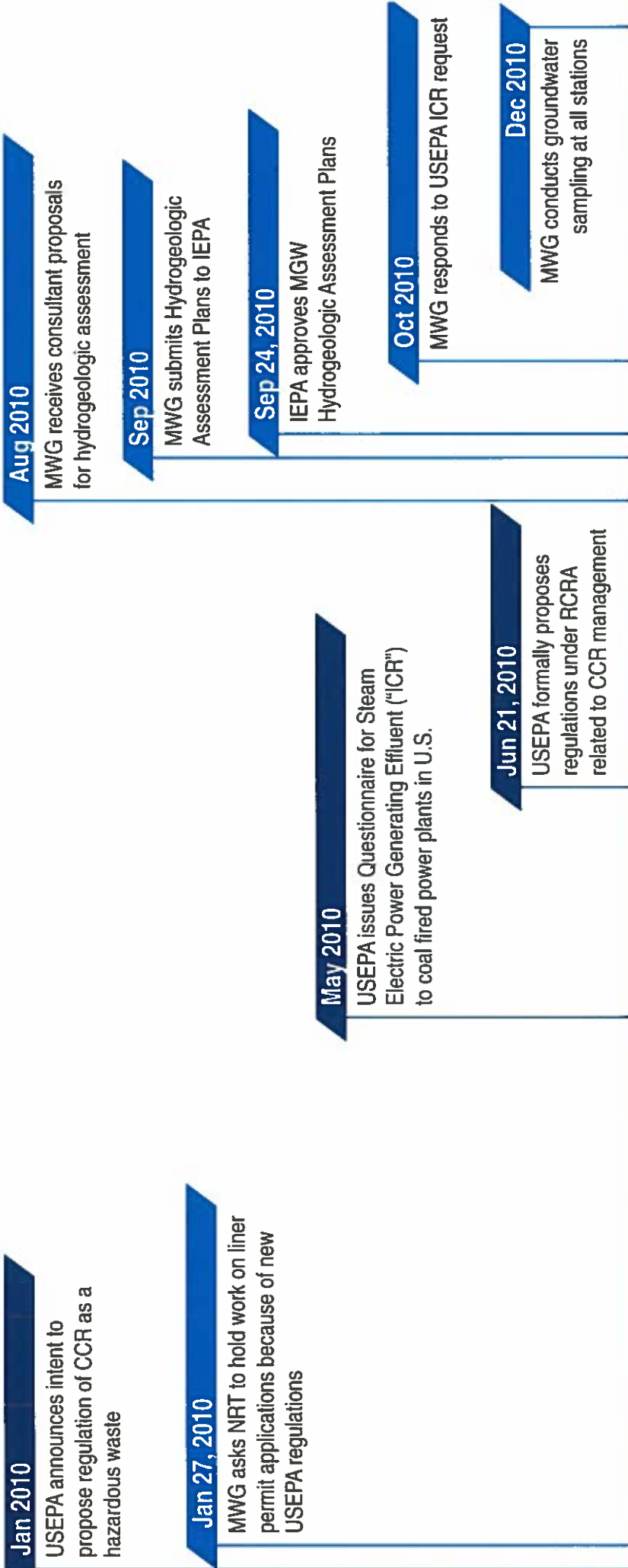
2009

Waukegan

Midwest Generation

General

Waukegan Timeline of Events



Waukegan Timeline of Events

Feb 2011

MGW submits Hydrogeologic Assessment Reports to IEPA

MGW conducts quarterly groundwater sampling of all Stations

Dec 7, 2012

MWG files for bankruptcy

Nov 2012

MWG begins process of completing all tasks in the four CCAs

Oct 24, 2012

IEPA accepts all four Compliance Commitment Agreements to resolve VNs

Oct 3, 2012

Sierra Club files this lawsuit

Jul 27, 2012 – Aug 2012

MWG submits VN responses to IEPA

Jun 2012

IEPA issues violation notices (VN) to MWG

2011

2012

Waukegan

Midwest Generator

General

Waukegan Timeline of Events

Jul 21, 2013

IEPA testifies at Waukegan NPDES Permit hearing: "Currently, we don't believe the active ash ponds are the source of contamination"

Aug 26, 2013

IEPA approves Waukegan ELUC

Oct 2013

Maria Race certifies CCAs completed

Mar 2014

NRG purchases MWG out of bankruptcy

Dec 19, 2014

USEPA issues final Coal Combustion Residual Rule

Jan 6, 2015

Lynn Dunaway e-mails Jamie Rabins and Bill Buscher, IEPA re Waukegan, stating "...the active ponds...are not the likely source of contaminants in groundwater."

Apr 17, 2015

Coal Combustion Residual Rule published in Federal Register

2013

2014

2015

Waukegan

Midwest Generation

General

Waukegan Timeline of Events

Jan 2016

MWG conducts first Annual Inspection of ash ponds at stations pursuant to Federal CCR rules

Oct 2016

MWG completes various reports pursuant to Federal CCR rules

Apr 2017

MWG completes Emergency Action Plans for the stations pursuant to Federal CCR rules

2016

2017

Waukegan

Midwest Generation

General